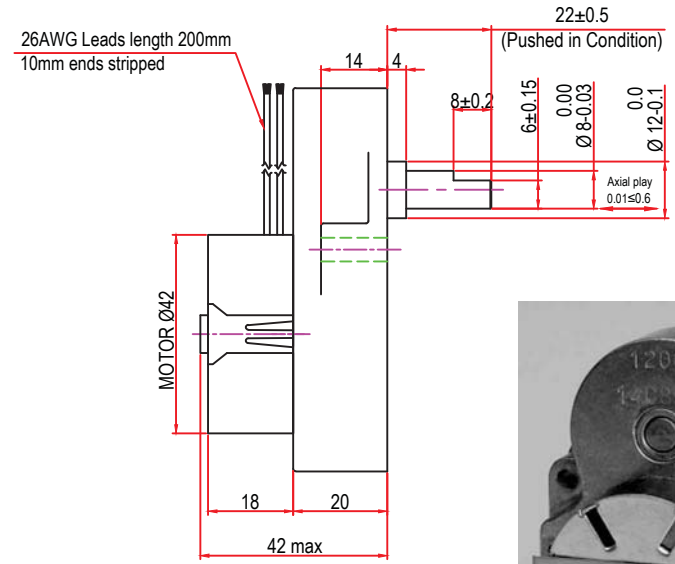
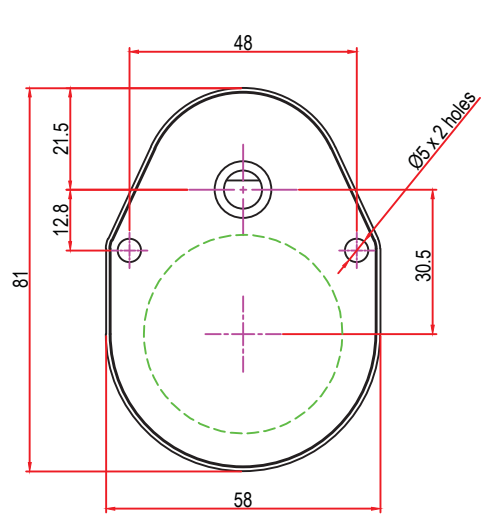


Issue/RevNo	Revision note	Date	Signature	Checked
1.0	Original Issue	22/11/2015	MBM	JYK



(Project: RS Components)		Final Inspection Table	
Sr. No.	Description	Method of Inspection	Acceptance Criteria
1	Supply Voltage	Test Bench	230V 50Hz
2	Duty Cycle	Description/ Lead colour	100% ED BLACK
3	Current	Test Bench	(6.75 ~ 8.25) / (6.3 ~ 7.7)mA
4	O/P Direction from shaft end	Visual	Unidirectional
5	O/P Speed of Geared Motor	Tachometer / Watch	1 HR/Rev
6	Noise Level	Sound Chamber	≤60dB (A) measured at a distance of 100mm in an anechoic chamber
7	Shaft Type	Vernier/Micrometer	OS
8	Shaft Axial Play	Vernier	0.01mm≤0.6mm
9	Bush	Visual / Vernier	Sintered Bush Ø12 mm x 4 mm
10	Lead Position	Visual	Top
11	Flexible Wire Leads	Ruler / Measuring Tape	26 AWG, 200mm Length ± 5mm
12	Wire strip length	Vernier / Ruler	10mm ± 10% (9mm ~ 11mm)

**Description :**  
 MT0GB7, 230V 50Hz, 1HR PER REV., OS TYPE SHAFT

Itemref	Client	Article No./Reference	
Designed by MBM	Checked by JYK	Approved by TNB	Date 22/11/2015
Scale do not scale			
<b>BRAND - MECHTEX</b> Navi Mumbai - 400 709.		<b>Assembly Drawing</b>	
F-MKT-022 VER 3.0		Edition	Sheet 1 of 1