

CLASS "B" MOTOR - SLEEVE BEARING MANUFACTURED (Motore classe "B" - Esecuzione a Bronzine)	
AXIAL CLEARANCE (Gioco Assiale)	1,0 - 3,5
SHELL (Fascia)	CLOSED (Chiusa)
END SHIELD - CABLE SIDE (Coperchio lato cavi)	CLOSED (Chiuso)
END SHIELD - OPPOSITE CABLE SIDE (Coperchio lato opposto cavi)	CLOSED (Chiuso)
ASSEMBLY SPECIFICATION No. (Normativa per note di montaggio)	EL.UN.0009
MECHANICAL SPECIFICATION No. (Normativa per note di controllo meccanico)	EL.CM.0002
ELECTRICAL SPECIFICATION No. (Prescrizione per controllo elettrico)	M.1680/1



CODE: 4-010-550
TYPE: 3FGB 100-40

230V ~ 50Hz 0.79A
97/180 W TH.PROT. INS.CL.B
1300 Rpm 4 µF 450 VL

ROTATION ← DATA

WHITE COMMON
BLACK MAX-1
BLUE MID-2
RED MIN-3
YELLOW
YELLOW C
YELLOW/GREEN

CE

A

B

C

D

E

A

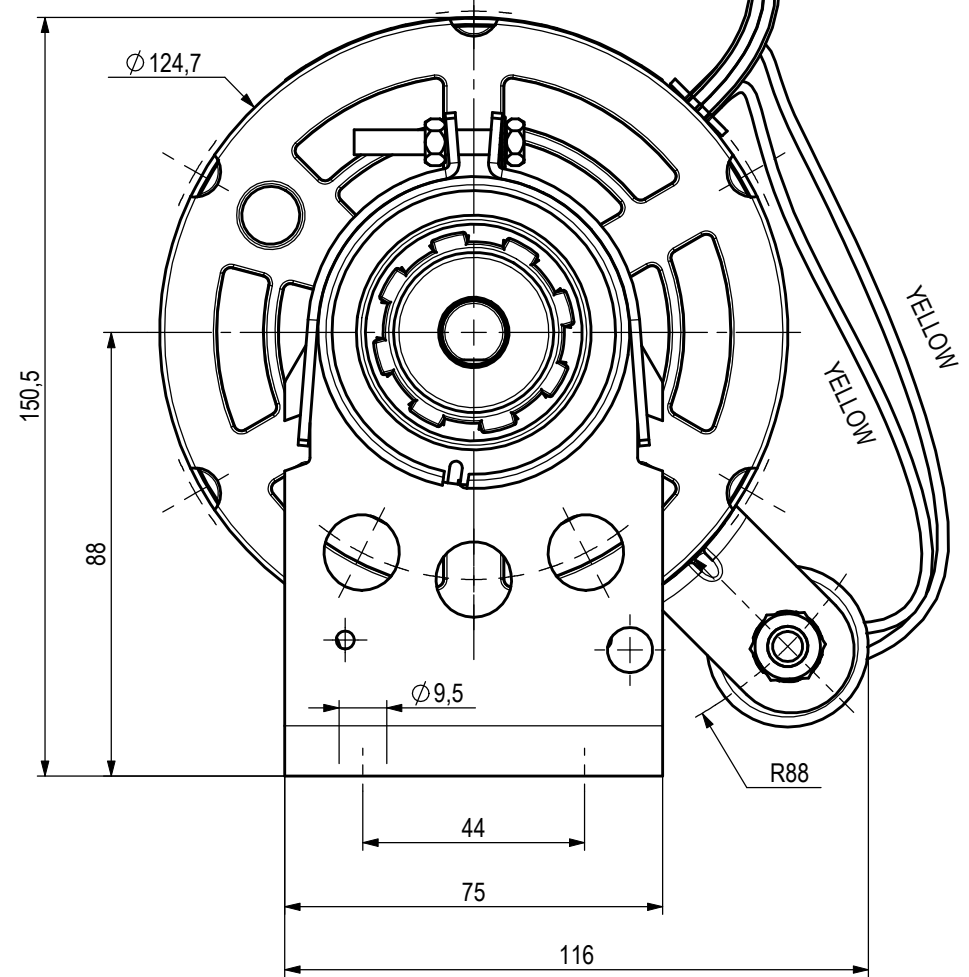
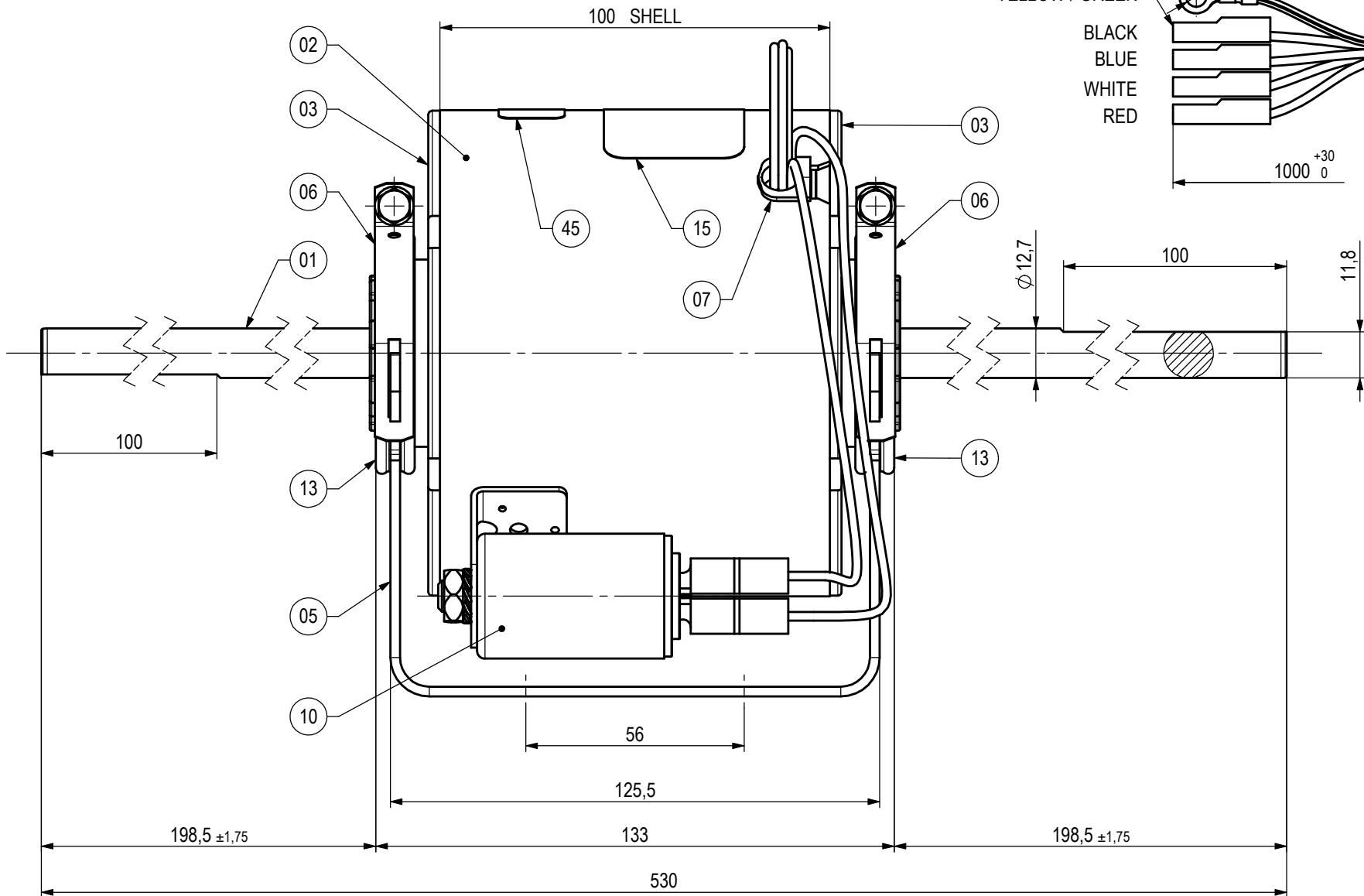
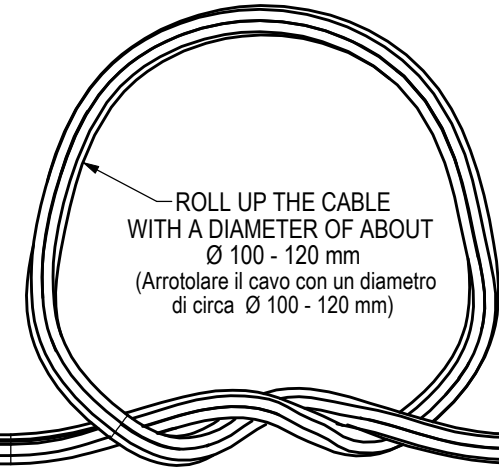
B

C

D

E

STRAIGHT RECEPTACLE
RECEPTACLE SLEEVE
(Faston femmina - Coprifaston)



Rel.	Date	Description	Executor signature	Checked
E	12-04-11	DELETED NYLON BOOTLACE: ITEM 24. (Tolto laccio Nylon: pallinatura 24)	RdM 11/0007 A.T.	D.Riboldi T.Sirtori
D	23-10-06	Rifatto lucido a CAD, aggiunto cavo di terra con capocorda a occhiello, eliminato lamella di massa	RdM 0042/06 A.T.	A.Zoncada T.Sirtori
C	08-05-95	Aggiornato nella nuova soluzione		

MODIFICATIONS

For dimension without tolerance see standard UNI EN 22768-mK

Treatment
Material

Weight gr.
Ref. No

SINGLE PHASE MOTOR
3FGB 100-40
Motore Monofase

4-010-550

Scale ---

Drawn M.C.
Date 04/05/95
Check ---
Scale ---

A3

Release **E**